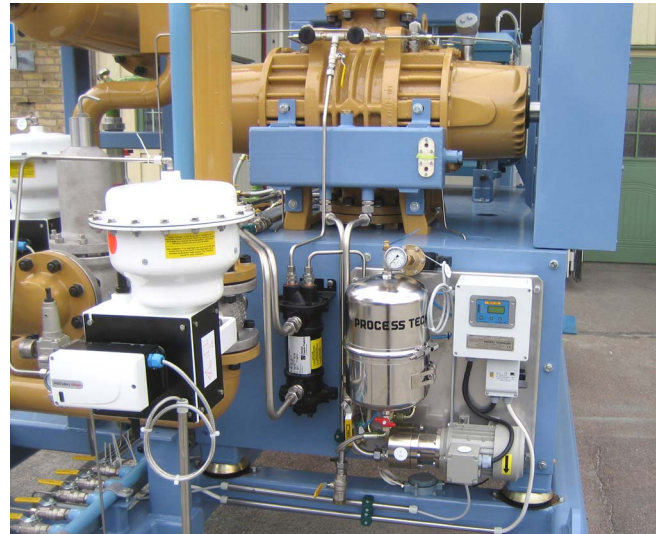




PRODUCT INFORMATION FOR ADVANCED FILTER COLLECTOR SYSTEM



AFC filter unit



Installed on skid

Facts

An environmental friendly and economic oil maintenance system for side stream installation. Intended for cleaning of lubrication-hydraulic- cutting- and transformer oil. Also suitable for special purpose and synthetic lubricants. Effectively cleans oil from debris, particles, oxidation residue and water. Cleaning achievement $<0.1\mu\text{m}$. A basic filter system consists of a casing with the filter cartridge insert, manometer, gear pump with motor and safety valve. Options are control box with motor protection, flow meter and display unit. The display unit has a built in alarm function for min/max flow and indication for exchange of the cartridge. The system has proven track records of extending the operating life time of bearings and seals in gearboxes and other rotating equipment as well as lubricated pistons and o-ring sealing systems.

Advantages

- Extended oil life time
- Environmental friendly
- Better maintenance economy with savings in related maintenance costs by 40 - 80%
- Prolonged operational life time of system components
- Less probability for failure improves worker safety
- Less production loss / stand stills
- Can be retrofitted on existing equipment

Data

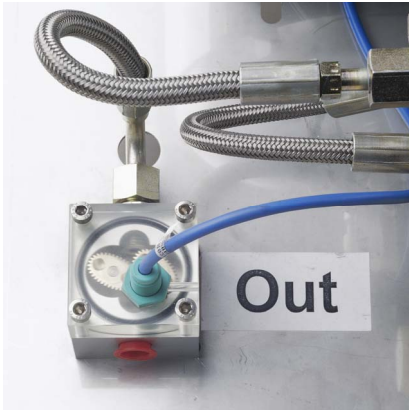
Weight	25 kg	Pump type	Internal gear pump
Dimension	L x H x W= 500 x 590 x 261 mm	Min / max flow	6-300 l/h
Cleaning degree	$< 0.1\mu\text{m}$	Inlet conn.	BSP 1"
Particle / water abs.	$< 3\text{ kg}$	Discharge conn.	BSP 1/4"
Working pressure	0.8 - 5 bar		
Safety valve setting	6 bar		
Manometer	0-6 bar		
Max. working temperature	+ 130°C		
Air ventilating valve	yes		
Drainage valve	yes		
Electric motor	0.12 kW, 8-pole motor Protection class IP55		
Power supply	single or three phase 50/60Hz		
Digital display	AEGIR 200, alarm relay max 2A, 30 VDC		
Flow meter	Kytola oval wheel 0.1-6 lpm		

Material

Casing	stainless steel AISI 304
Filter cartridge	cellulose / polyamide
Control box	Rittal, IP67



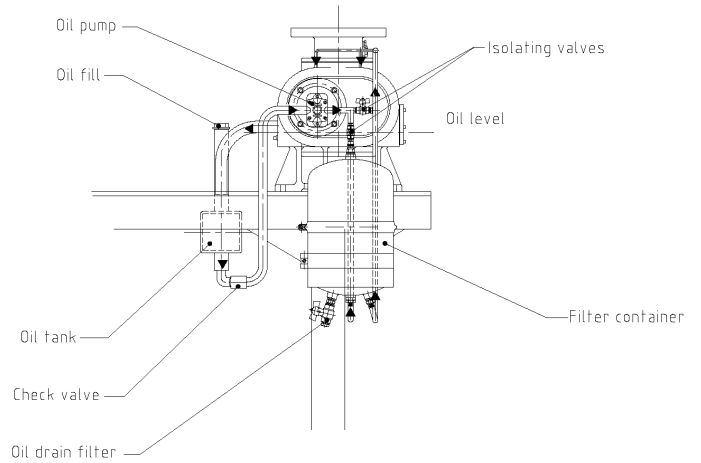
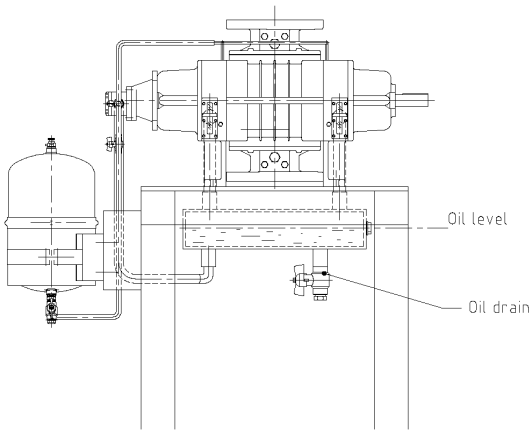
PRODUCT INFORMATION FOR ADVANCED FILTER COLLECTOR SYSTEM



Oval wheel flow meter



Digital display



Typical installation on blower

In this case a mechanical driven gear pump has been built onto the original blower. The modification is done in order to meet the ATEX regulation.

